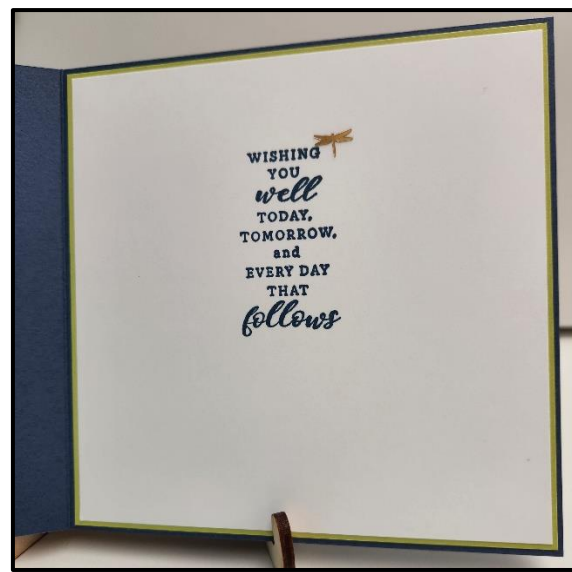
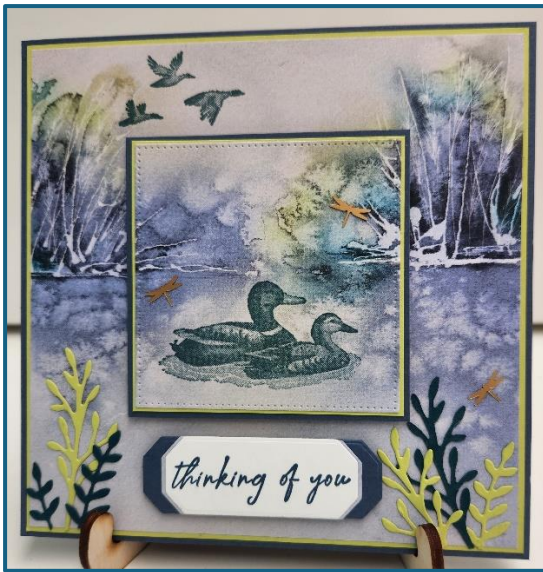


## Feathered Flight



### **Card Stock:**

Misty Moonlight – 11" x 5-1/2"  
Lemon-Lime Twist – 5-3/8" x 5-3/8" (Cut 2)  
Thoughtful Journey DSP – 5-1/4" x 5-1/4"  
Misty Moon Light – 3" x 3"  
Lemon-Lime Twist – 2-7/8" x 2-7/8"  
Basic White – 5-1/4" x 5-1/4"  
Basic White Scrap  
Pretty Peacock Scrap  
Lemon-Lime Twist Scrap  
Misty Moonlight Scrap

### **Stamp Sets:**

Feathered Flight (OE)  
Wild Ferns

### **Ink:**

Misty Moonlight Stampin' Pad  
Pretty Peacock Stampin' Pad

### **Supplies/Accessories:**

Delicate Forest Dies  
Stylish Shapes Dies  
Adhesive-Backed Dragonflies & Birds (OE)  
Stampin' Dimensionals  
Multipurpose Liquid Glue  
Stampin' Cut & Emboss Machine

### **Instructions:**

1. Score & fold the Misty Moonlight 11" x 5-1/2" at 5-1/2" to form card size of 5-1/2" x 5-1/2".
2. Attach Lemon-Lime Twist 5-3/8" x 5-3/8" to card front and inside of card.
3. Using the 2-3/4" square die from the Stylish Shapes Dies set and Stampin' Cut & Emboss Machine, cut out the center of the Thoughtful Journey 5-1/4" x 5-1/4" DSP. Set the center square aside. Using the flying ducks from the Feathered Flight stamp set and the Pretty Peacock stamp pad, stamp image onto the top of the Thoughtful Journey 5-1/4" x 5-1/4" DSP. From the Pretty Peacock and Lemon-Lime Twist Scraps cut out leaf branches using the dies from the Delicate Forest Dies set. Using liquid glue, attach to the branches to bottom, a few on each side, of the Thoughtful Journey 5-1/4" x 5-1/4" DSP. Trim as needed and attach to card front. See above for placement.
4. Attach the Lemon-Lime Twist 2-7/8" x 2-7/8" card stock to the Misty Moonlight 3" x 3" card stock.
5. Using the two ducks in water stamp from the Feathered Flight stamp set and the Pretty Peacock stamp pad, stamp ducks on the Thoughtful Journey square from Step 3. Attach this square to the assembled square from Step 4. Using dimensionals, attach to the cut square on card front.
6. Stamp verse from the Feathered Flight stamp set onto a Basic White scrap using the Misty Moonlight stamp pad. Cut out using the large label die from the Delicate Forest Dies. Cut this twice to cut the label down to fit the verse. Then cut out a label from the Misty Moonlight scrap and attach the stamped label onto this. Attach to card front using dimensionals as shown above.
7. Attach a few of the dragonflies from the Adhesive-Backed Dragonflies & Birds embellishments.
8. Stamp verse from the Wild Ferns stamp set onto the Basic White 5-1/4" x 5-1/4" card stock using the Misty Moonlight stamp pad. Attach to inside of card and you are now done!!