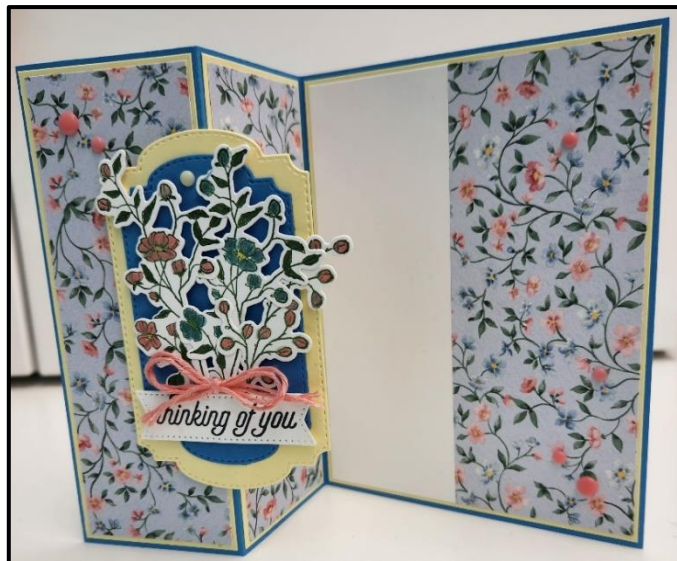
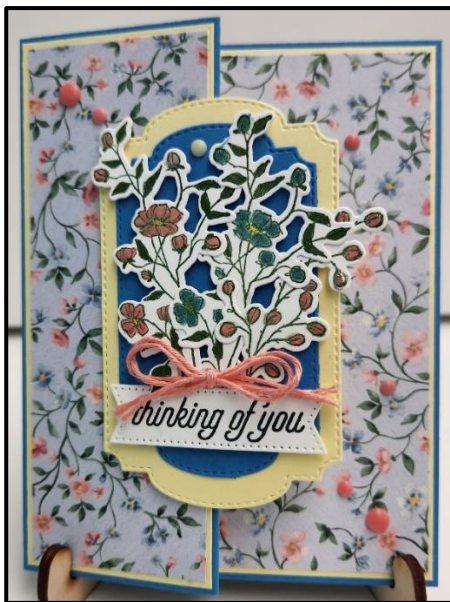


## Thinking of You



### Card Stock:

Boho Blue – 5-1/2" x 8-1/2"  
(Score @ 2-1/8" & 4-1/4")  
Lemon Lolly – 5-3/8" x 2" (Cut 2)  
Flight & Airy DSP – 5-1/4" x 1-7/8" (Cut 2)  
Lemon Lolly – 5-3/8" x 4-1/8" (Inside)  
Basic White – 5-1/4" x 1-7/8" (Inside)  
Flight & Airy DSP – 5-1/4" x 2-1/8" (Inside)  
Basic White Scraps  
Lemon Lolly Scrap  
Boho Blue Scrap

### Ink:

Tuxedo Black Memento Pad  
**Stampin' Write Markers:**  
Flirty Flamingo  
Balmy Blue  
Lemon Lolly  
Garden Green  
Garden Green Stampin' Pad  
Clear Embossing Powder

### Stamp Sets:

Dainty Delight  
Special Moments

### Supplies/Accessories:

Thoughtful Expressions Dies  
Stylish Shapes Dies  
Wink of Stella  
Rainbow Adhesive Backed Dots  
Baker's Twine Three Color Pack  
Stampin' Dimensionals (Large & Small)  
Stampin' Cut & Emboss Machine  
Heat Tool

### Instructions:

1. Score the Boho Blue 5-1/2" x 8-1/2" on the long side at 2-1/8" x 4-1/4" and fold in a mountain fold as shown above.
2. Attach the two Lemon Lolly 5-3/8" x 2" card stock pieces to the first two sections.
3. Attach the two Flight & Airy 5-1/4" x 1-7/8" DSP pieces to the first two sections over the Lemon Lolly.
4. Attach the Lemon Lolly 5-3/8" x 4-1/8" card stock to inside of card.
5. Attach the Basic White 5-1/4" x 1-7/8" inside of card toward the left side leaving about 1/8" border around the 3 sides.
6. Attach the Flight & Airy 5-1/4" x 2-1/8" DSP to the inside of card to the right of the Basic White as shown above.
7. Using the large Thoughtful Expressions Die and Stampin' Cut & Emboss Machine, punch label out of the Lemon Lolly scrap. Attach to card front using dimensionals on the left side only. I would dry fit to ensure you don't overlap the dimensionals.
8. Using the next size label from the Thoughtful Expressions Dies set, cut out a Night of Navy scrap. Attach to the Lemon Lolly on card front using regular adhesive.
9. Using the Garden Green stamp pad, stamp several flower images onto some Basic White scraps. Using the clear embossing powder and heat tool, emboss the images. Color in the flowers using the above listed markers or colors of choice. Using the coordinating dies from the Thoughtful Expressions Dies set, cut out the flowers. Using mini dimensionals attach the flowers to your label on the card front as shown above.
10. Stamp the Thinking of You from the Special Moments stamp set onto a Basic White scrap using the Memento stamp pad. Cut out using the long narrow label die from the Stylish Shapes Dies set. You'll need to cut a second time to fit the verse. Attach to card front using dimensionals.
11. Tie a double bow in a length of Baker's Twine and attach to the flowers on card front just above your label using a mini glue dot. Randomly attach Rainbow Adhesive Backed Dot to card front and you are now done!!